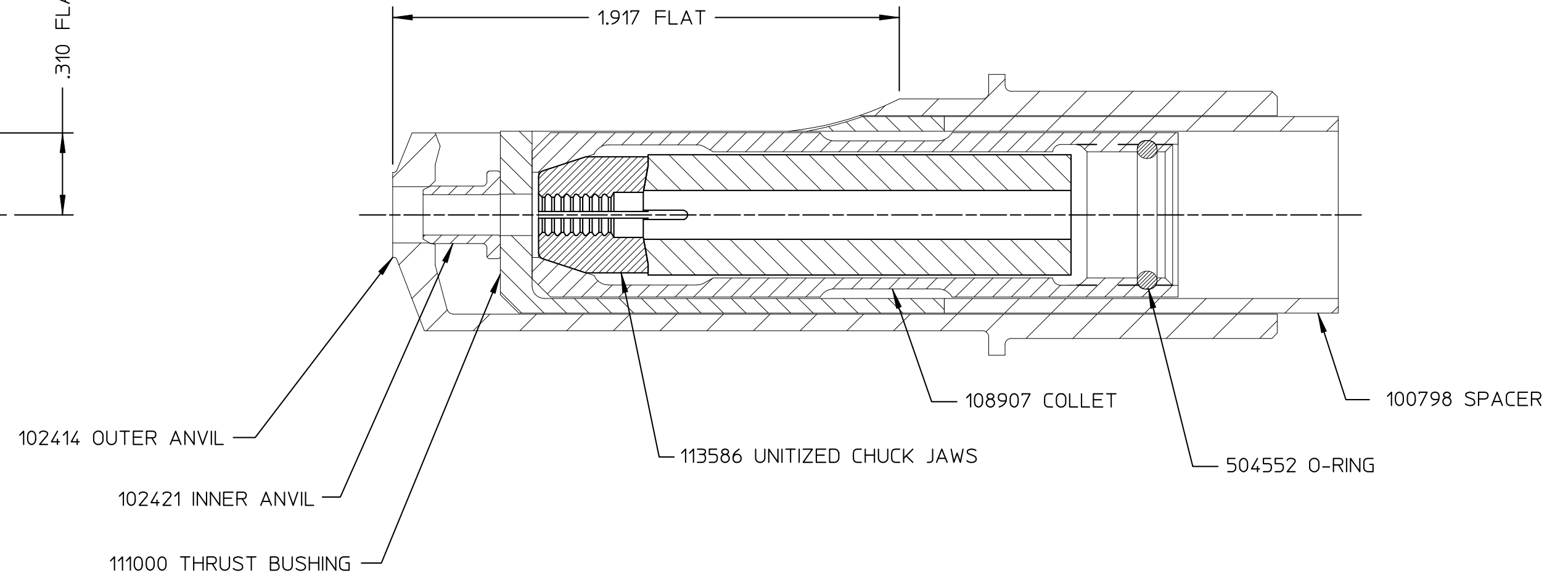
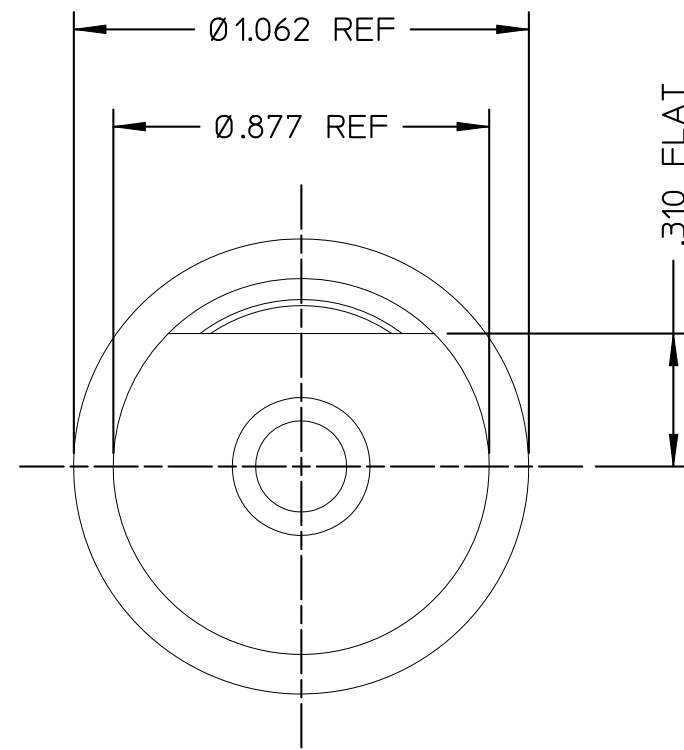


| REV | DESCRIPTION    | DATE     |
|-----|----------------|----------|
| H   | REDRAWN ON CAD | 06/15/99 |



HUCK INTERNATIONAL, INC., I.S.D.  
 1 CORPORATE DRIVE, P.O. BOX 2270  
 KINGSTON, NEW YORK 12401

NOSE ASSEMBLY  
 B6 BLIND BOLT

DET: MP CK: DATE: 06/14/99 SCALE: 2:1

FOC. FAC. **B** **99-589**